

WEY® Eccentric Butterfly Valve Type TZ 01-4

4.1.40

with Worm Gear Type WK



Standard Construction

Body: Ductile Iron EN-JS1030

Actuation: Handwheel/Worm Gear

Disc: Ductile Iron EN-JS1030

Nominal pressure: 10/16 bar

Corrosion protection: Body inside with enamel finish and outside with a cermet and top coat RAL 5015.

Flange drilling EN 1092 / ISO 7005

Face-to-face EN 558-1 / ISO 5752 part 14

Shaft: 1.4057

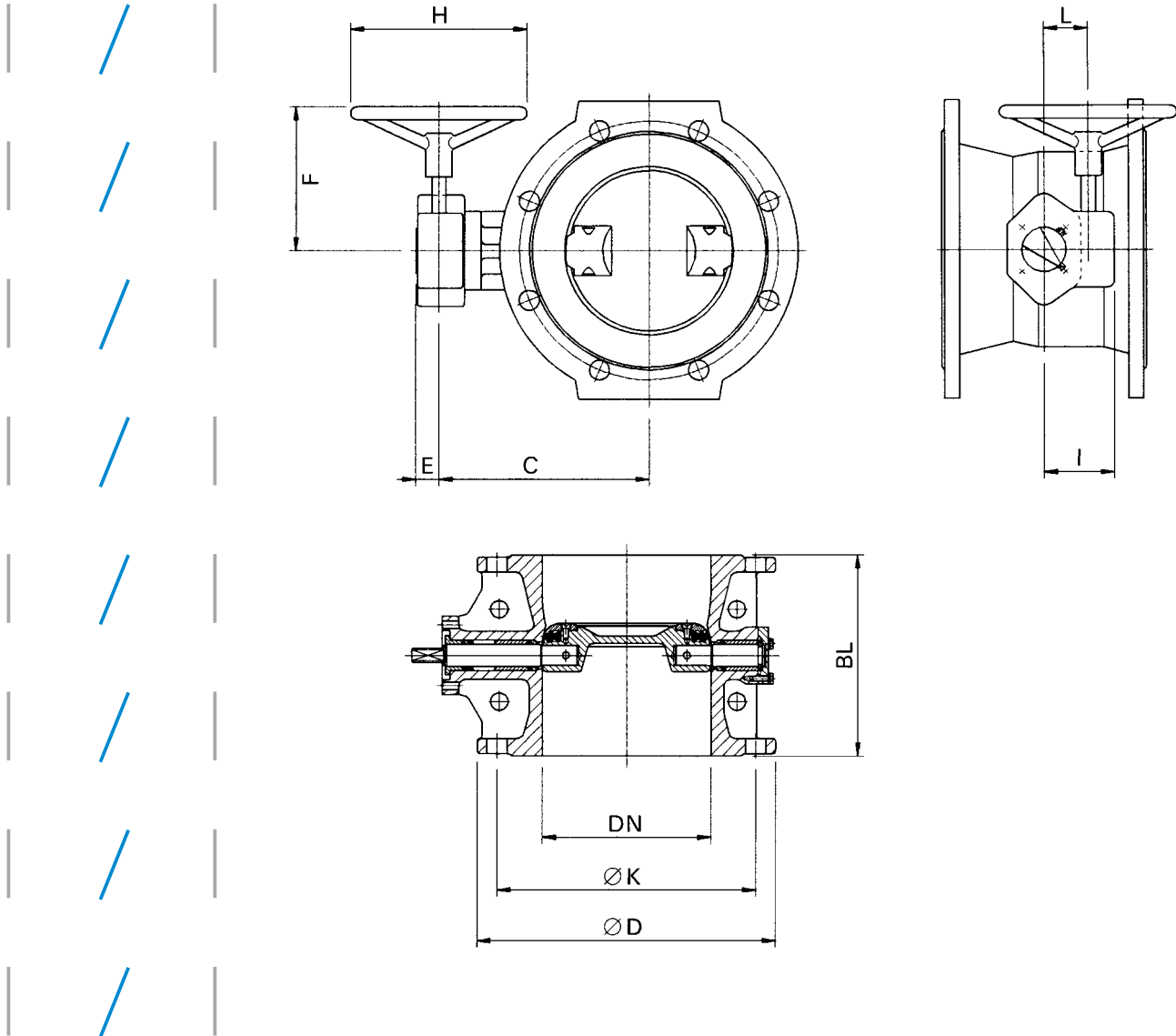
Actuating flange: acc. to ISO 5211

Bearing: 2.1090

Test acc. EN-12266-1, rate A

Seal: EPDM

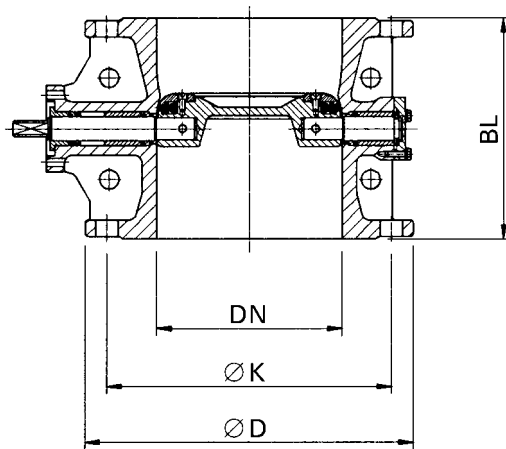
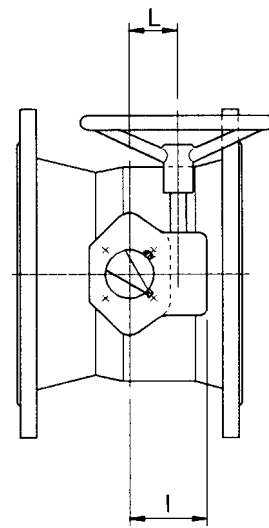
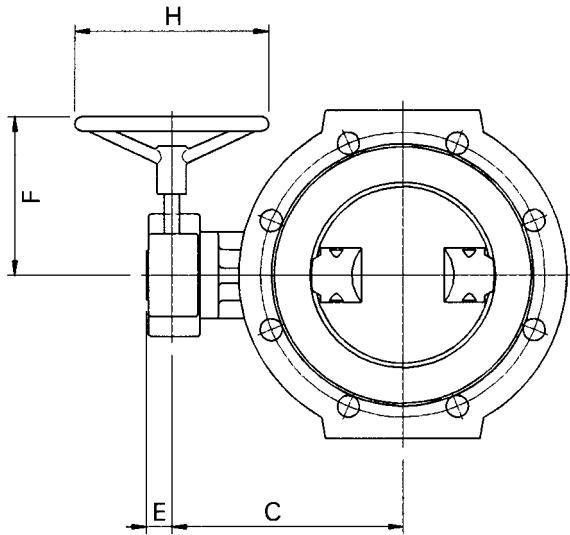
Size DN 200 and larger include flange footing



Nominal pressure PN max. 10 bar, flange drilling PN 10

DN	D	K	BL	C	E	F	H	I	L	Qty screws	Actuating Flange	Gear WK	Turns to close	Weight (kg)
100	220	180	190	162	38	145	160	92	50	8 × M16	F07	10	10	22
125	250	210	200	212	38	145	160	92	50	8 × M16	F07	10	10	34
150	285	240	210	217	38	145	160	92	50	8 × M20	F07	10	10	43
200	340	295	230	242	38	170	250	92	50	8 × M20	F07	10	10	48
250	400	350	250	274	53	245	315	127	77	12 × M20	F10	70	10	76
300	445	400	270	303	53	245	315	127	77	12 × M20	F10	70	10	89
350	505	460	290	334	53	265	400	127	77	16 × M20	F12	70	10	119
400	565	515	310	399	53	265	400	127	77	16 × M24	F12	70	10	174
500	670	620	350	454	50	305	400	136	86	20 × M24	F14	125	11.5	290
600	780	725	390	557	55	305	400	168	111	20 × M27	F16	170	11	389

Large size on request.



All information  
for reference only

Modifications  
reserved

Nominal pressure PN max. 16 bar, flange drilling PN 16

DN	D	K	BL	C	E	F	H	I	L	Qty screws	Actuating Flange	Gear WK	Turns to close	Weight (kg)
100	220	180	190	162	38	145	160	92	50	8 × M16	F07	10	10	22
125	250	210	200	212	38	145	160	92	50	8 × M16	F07	10	10	34
150	285	240	210	217	38	170	250	92	50	8 × M20	F07	10	10	43
200	340	295	230	242	38	170	250	92	50	12 × M20	F07	10	10	48
250	400	355	250	274	53	245	315	127	77	12 × M24	F10	70	10	76
300	455	410	270	303	53	265	400	127	77	12 × M24	F12	70	10	90
350	520	470	290	334	53	265	400	127	77	16 × M24	F12	70	10	120
400	580	525	310	404	50	305	400	136	86	16 × M27	F14	125	11.5	179
500	715	650	350	454	50	305	400	136	86	20 × M30	F14	125	11.5	290
600	840	770	390	557	55	305	400	168	111	20 × M33	F16	170	11	389

Large size on request.

